



# MR & XR SERIES

## FIXTURE W/ SWIVELPOLE

### PRE-WIRED & PRE-ASSEMBLED



#### Features

- Available with Multiple distribution patterns
- Industrial, Marine & Hazardous location rated
- Thermally managed for maximum longevity
- 3,000 - 20,000 luman range
- Operation and environmental benefits of LED technology
- Vented enclosure ensuring quality and robust operation
- 0-10V Dimming to 1%

#### Fixture Compatibility

- MR Series - w/ Pole Mount (MR-PM)
  - w/ Slip Fitter Yoke Mount (MR-SFY)
- XR Series - w/ Pole Mount (XR-PM)
  - w/ Slip Fitter Yoke Mount (XR-SFY)

#### Output

- 3,000 - 20,000 luman range
- Standard 5000K colour temperature  
(Additional colour temperatures available)

#### Certifications

##### MR Series

- Certified to UL 1598, CSA 22.2 No. 250.0, CSA 22.2 No. 250.13
- Certified to UL 844, CSA 22.2 No. 137
- Class I, Division 2, Groups ABCD, T4
- Class II, Division 2, Groups FG; Class III, T4A
- Class I, Zone 2, Groups IIC; Zone 22

##### XR Series

- Certified to UL 1598, CSA 22.2 No. 250.0-08 UL8750 / CSA 22.2 No. 250.13-17
- Certified to UL 844, CSA 22.2 No. 137-18
- Class I, Division 2, Groups ABCD/Class I, Zone 2, Groups IIC;
- Class II, Division 2, Groups FG /Class I, Zone 22, Groups IIIB; Class III

#### Warranty

- Five (5) year limited warranty

The most versatile LED luminaires for industrial locations combined with the industry leading high-safety luminaire support system.

Access to light fixtures and equipment can be hazardous, time consuming and costly when using ladders, scaffolds or other access equipment.

Maxis™ is the next generation lowering pole solution for safely accessing light fixtures and equipment.

The MR Series & XR Series robustness and versatility make them excellent fixtures for a wide range of projects and design work. Nemalux delivers outstanding products for specifications for new and existing facilities.

**Swivelpole™**  **Nemalux™**  
Harsh & Hazardous Lighting



1-877-636-2589  
1-877-NEMALUX

info@nemalux.com  
www.nemalux.com

 MADE IN CANADA



# Luminaires

## Product Features

### Junction Box

- Direct heat transfer from power supply to external case for optimal performance
- Plenty of wiring space for optional accessories (Contact us for custom options)
- 3/4" NPT entrees
- IP 66 rated. Suitable for wet locations

### LEDs

- Proven reliability
- High efficiency
- Superior CRI
- Several CCT options for added design flexibility

### Light Engine

- Metal core PCB (MCPCB)
- Modular Optics

### Housing

- Copper-free high pressure die-cast aluminum case
- Triple layer coating suitable for marine applications
- Physical separation between power supply and LEDs
- Lens and case are designed to withstand severe impact

### Power Supplies

- Two input ranges for ultimate flexibility
- Utilizes high performance LED drivers for better efficiency and up to 100,000 hours of maintenance-free operation
- Built-in JB with 3/4" NPT entrees

### Thermal Management

- Ample surface area of head ensures LEDs are kept running at maximum efficiency, even at 55°C temperature
- Unique heat sink design creates increased airflow for optimal LED and power supply operating temperature
- Physical separation of electronics for increased system reliability
- Perimeter band adds ruggedness and channels heat through fins with laminar flow principles



**MR-PM**  
Pole Mount



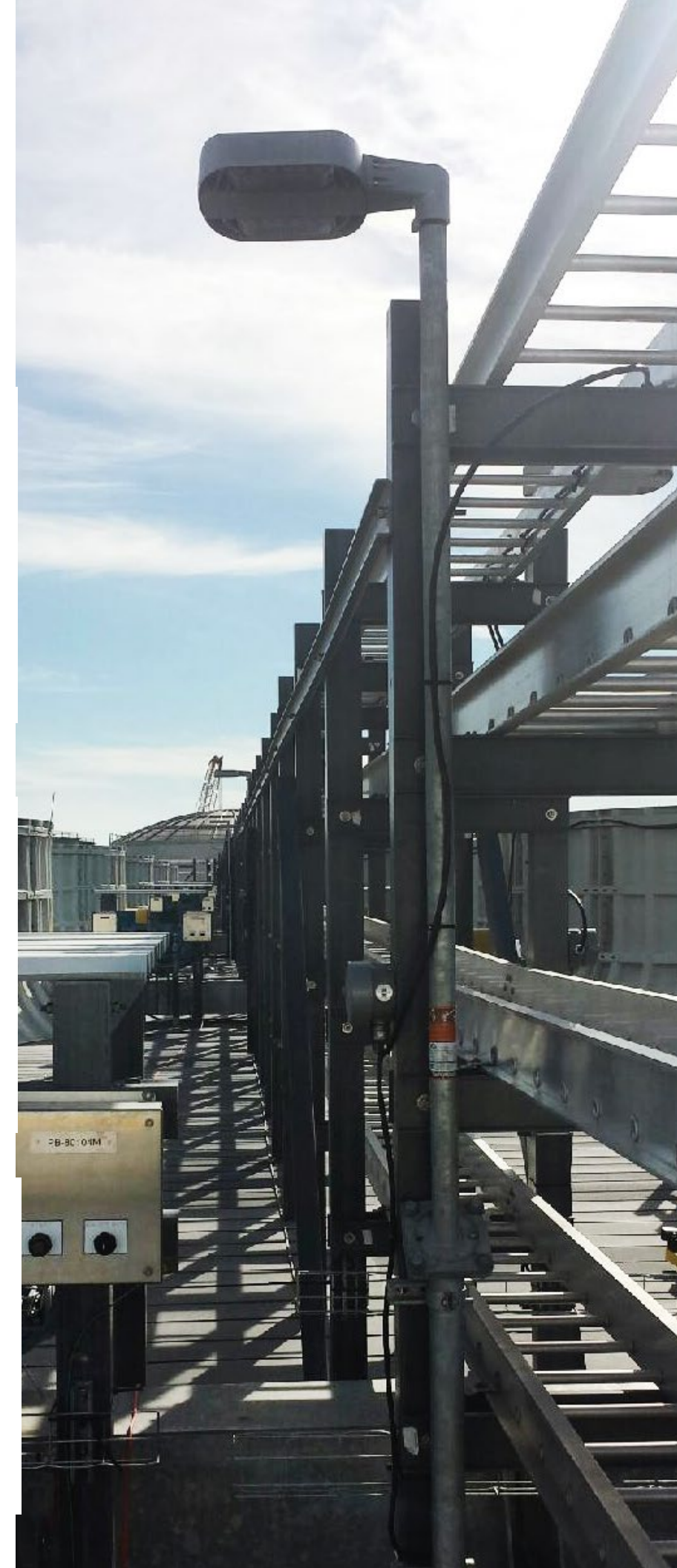
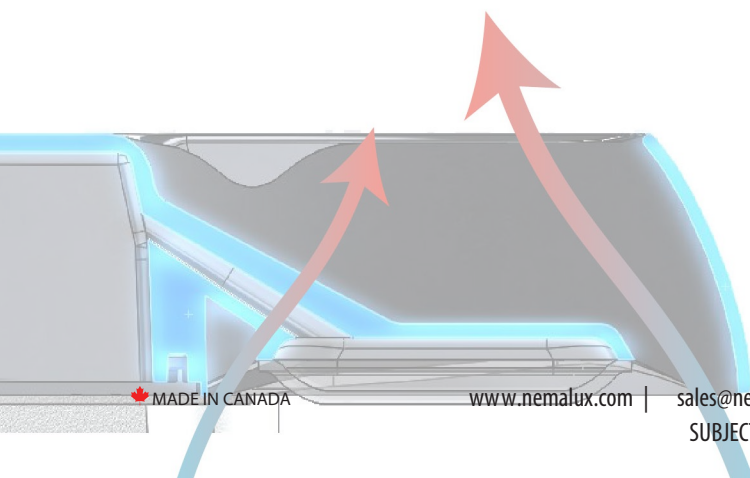
**MR-SFY**  
Slip Fitter  
Yoke Mount



**XR-PM**  
Pole Mount



**XR-SFY**  
Slip Fitter  
Yoke Mount





# SwivelPole

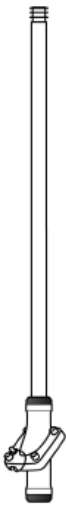
## BENEFITS

- Superior 45° lowering pole technology
- Cast steel joint with minimal moving parts
- Structurally certified heavy duty product
- Suitable for hazardous locations and harsh environments
- Solutions for incorporating into new build and converting existing rigid poles to lowering poles

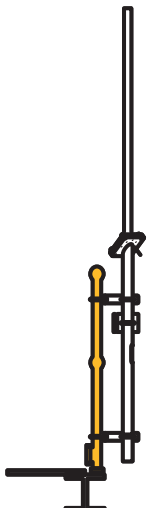


- Safety: Light fixture is inverted and lowered to a safe working height and ergonomic service position.
- Simplicity: Easy to install and operate.
- Savings: Maximized profit through substantially reduced operating and maintenance costs.
- Flexibility: Incorporate into new builds or convert existing rigid poles to lowering poles.

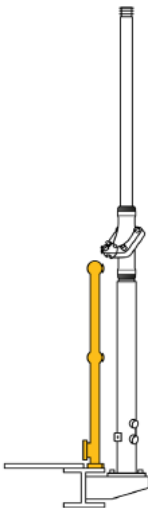
## COMPATIBLE SWIVELPOLES



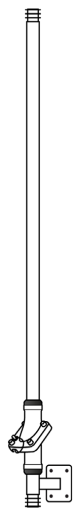
R1 M1 | R2 M1 :  
Maxis Joint w/ Pole Top



S1 M1 | S3 M1 :  
Stanchion Mounted



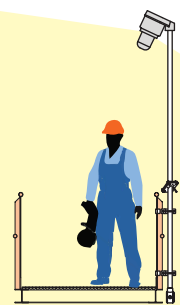
ST6 M1 | ST7 M1 :  
Structure Mounted



C1 M1 | C2 M1 :  
Column/Wall Mounted



F1 M1 | F2 M1 :  
Base Mounted



## CONVENTIONAL LIGHTING

HIGH LIGHT POLLUTION

POOR OPTICAL CONTROL

BLINDING GLARE

HIGH MAINTAINENCE & OPERATION COSTS

## NEMALUX ADVANTAGES

DARK SKY CERTIFIED - LOWER ENVIRONMENTAL IMPACT  
- reduced light pollution

INCREASED PERSONNEL CONFORT & SAFETY  
- reduced glare

INCREASED EFFICIENCY  
- High Lumen per Watt & reduced fixture count with greater pole spacing

DECREASED WEIGHT  
- increased installation safety



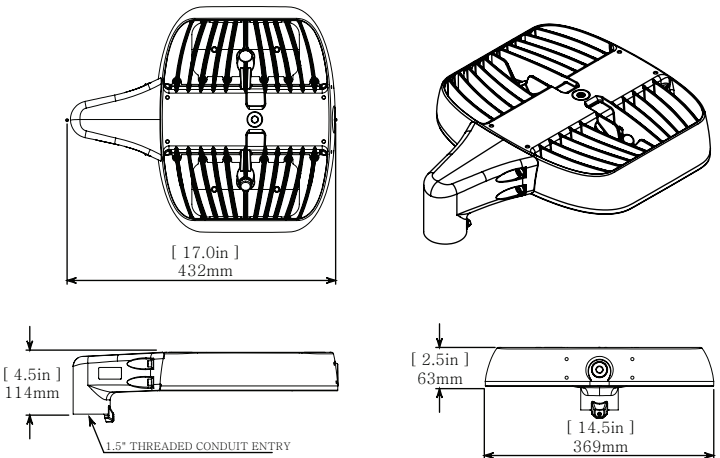
To inquire about products, discuss your needs or get a no-obligation lighting layout from our experts, please contact us.

**1-877-NEMALUX | 1-877-636-2589**

## MR SERIES MOUNTING OPTIONS

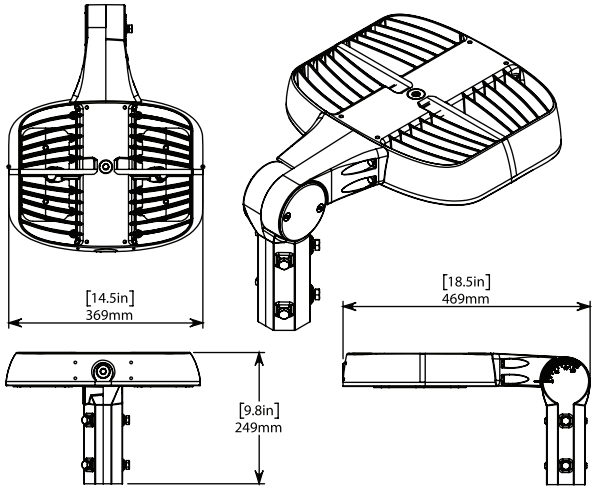
**POLE MOUNT (MR-PM) :** 5.64 kg | 12.4 lbs | EPA: 0.04 m<sup>2</sup> / 0.44 ft<sup>2</sup>

Non adjustable 90° | Dark Sky Compliant



**SLIP FITTER YOKE MOUNT (MR-SFY) :** 6.55 kg | 14.7 lbs | EPA: 0.13 m<sup>2</sup> / 1.42 ft<sup>2</sup>

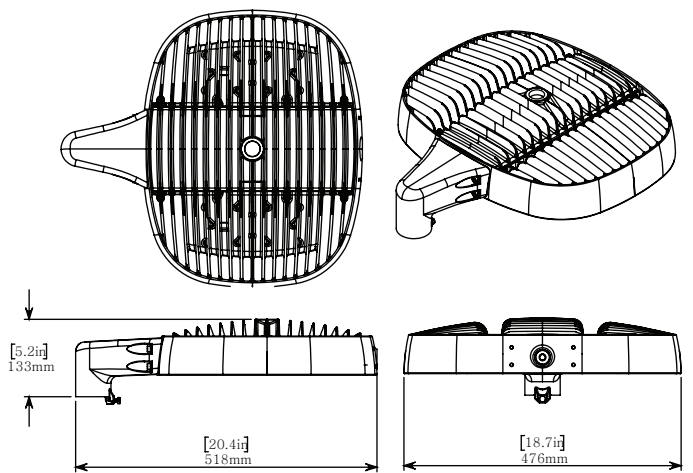
Stepped to accept either 1.5\"/>



## XR SERIES MOUNTING OPTIONS

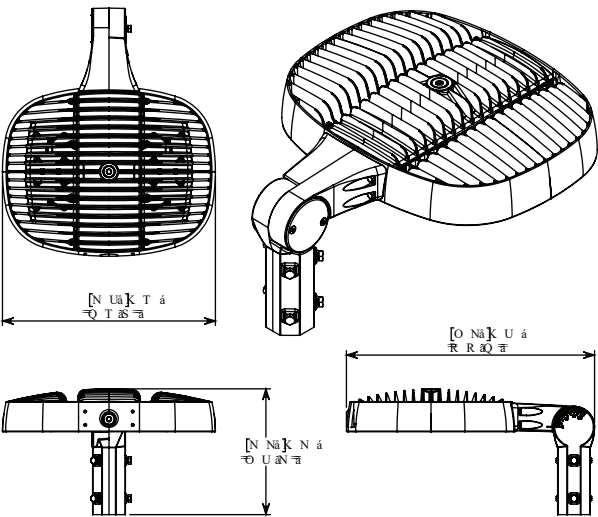
**POLE MOUNT (XR-PM) :** 8.6 kg | 18.9 lbs | EPA: 0.05 m<sup>2</sup> / 0.49 ft<sup>2</sup>

Non adjustable 90° | Dark Sky Compliant



**SLIP FITTER YOKE MOUNT (XR-SFY) :** 10.05 kg | 22.1 lbs | EPA: 0.18 m<sup>2</sup> / 1.99 ft<sup>2</sup>

Stepped to accept either 1.5\"/>



## ADVANTAGES OF NEMALUX UPGRADES

Free  
Lighting  
Audit &  
Design

Optimized  
Lumen  
Output

LED Energy  
Efficiency

Glare  
Control

Optics,  
Mount & Pole  
Options

Lower  
Lifecycle  
Costs